

# COMUNE DI SANTA MARINA SALINA

(MESSINA)

## FATTIBILITA', AGGIORNAMENTO E MODIFICA DEL PIANO REGOLATORE DEL PORTO

È copia conforme a quello adottato con delibera consiliare n. 46 del 19-4-1985 approvata dalla C.P.C. nella seduta del 24-6-1985 n. 44164/43569 gr. 8.  
S. Marina Salina, li 25-3-1986

IL SINDACO



IL SEGRETARIO COMUNALE

All. 4.5 - Studio del litorale circostante. Figure.



REGIONE SICILIANA

Assessorato del Territorio e dell'Ambiente  
CONSIGLIO REGIONALE DELL'URBANISTICA

VISTO: CON RIFERIMENTO AL PROPRIO VOTO

N. 821 del 28-11-86

IL SEGRETARIO

Redatto da:

Ing. M. Napolitano

IL SINDACO



REGIONE SICILIANA  
Assessorato del Territorio e dell'Ambiente

IL PRESENTE DOCUMENTO COSTITUISCE ALLEGATO

AL D. A. N.°

606/87

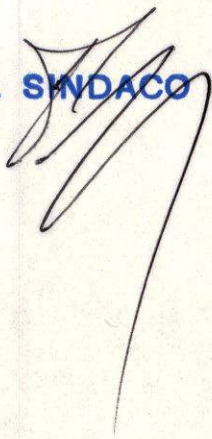
DEL 12/4/88

L'ASSESSORE



INDICE DELLE FIGURE

IL SINDACO



IL SEGRETARIO COMUNALE





# INDICE

Fig. 3.3.1	-	Curve di isotrascinamento per	D = 45°	e t <sub>r</sub> = 3
" 3.3.2	-	" " " " "	" = 67,5°	" "r = "
" 3.3.3	-	" " " " "	" = 90°	" " = "
" 3.3.4	-	" " " " "	" = 112,5°	" " = "
" 3.3.5	-	" " " " "	" = 45°	" " = 5
" 3.3.6	-	" " " " "	" = 67,5°	" " = "
" 3.3.7	-	" " " " "	" = 90°	" " = "
" 3.3.8	-	" " " " "	" = 112,5°	" " = "
" 3.3.9	-	" " " " "	" = 45°	" " = 10
" 3.3.10	-	" " " " "	" = 67,5°	" " = "
" 3.3.11	-	" " " " "	" = 90°	" " = "
" 3.3.12	-	" " " " "	" = 112,5°	" " = "
" 4.2.1	-	Curve di diffusione per	D = 45°	e t <sub>r</sub> = 3
" 4.2.2	-	" " " " "	" = 67,5°	" "r = "
" 4.2.3	-	" " " " "	" = 90°	" " = "
" 4.2.4	-	" " " " "	" = 112,5°	" " = "
" 4.2.5	-	" " " " "	" = 45°	" " = 5
" 4.2.6	-	" " " " "	" = 67,5°	" " = "
" 4.2.7	-	" " " " "	" = 90°	" " = "
" 4.2.8	-	" " " " "	" = 112,5°	" " = "
" 4.2.9	-	" " " " "	" = 45°	" " = 10
" 4.2.10	-	" " " " "	" = 67,5°	" " = "
" 4.2.11	-	" " " " "	" = 90°	" " = "
" 4.2.12	-	" " " " "	" = 112,5°	" " = "

IL SINDACO



IL SEGRETARIO COMUNALE

R



FIGURE

IL SINDACO



IL SEGRETARIO COMUNALE

2



IL SINDACO



IL SEGRETARIO COMUNALE

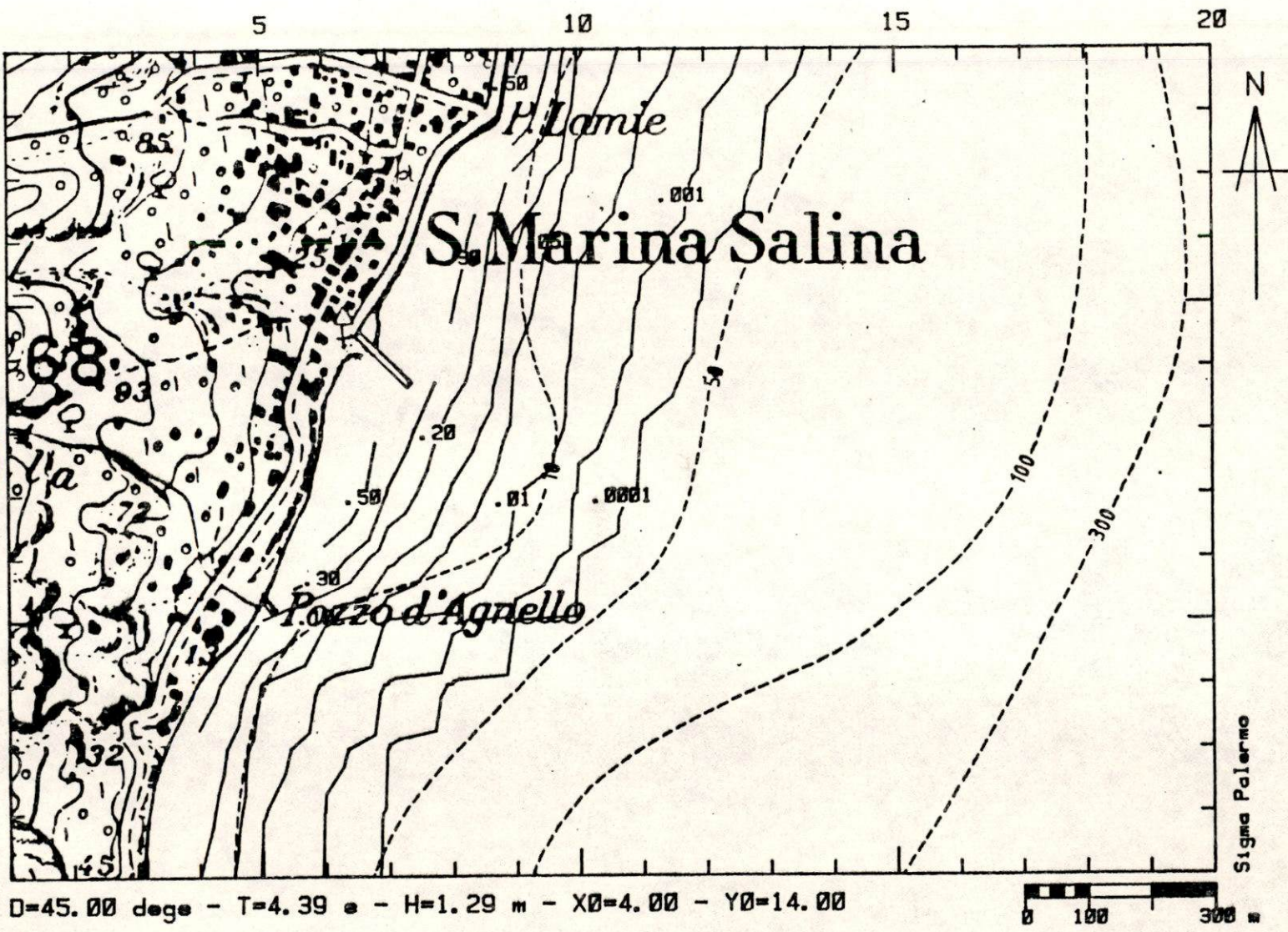


Fig. 3.3.1







*[Signature]*  
IL SINDACO



*[Signature]*  
IL SEGRETARIO COMUNALE

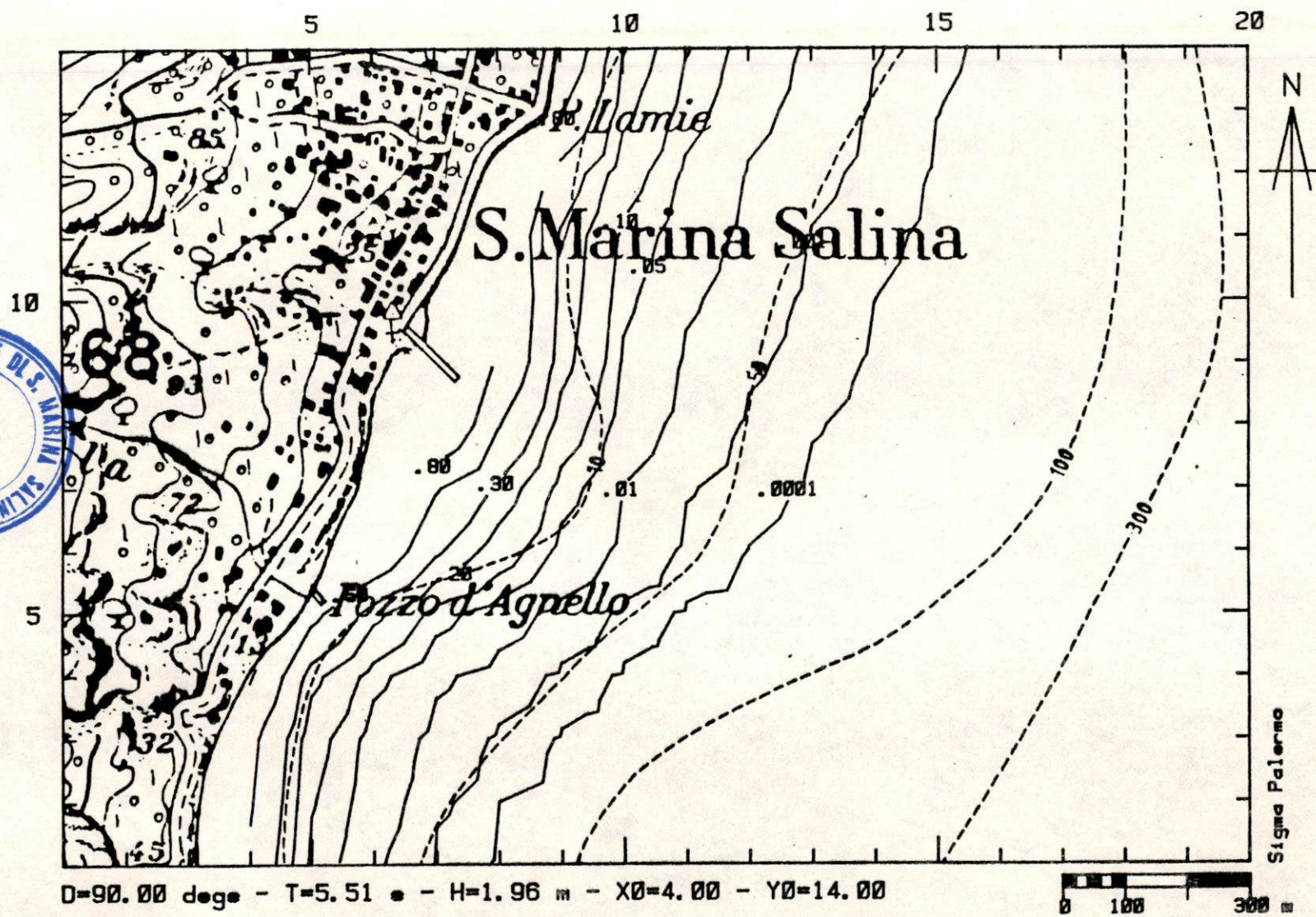


Fig. 3.3.3



IL SEGRETARIO COMUNALE



IL SINDACO

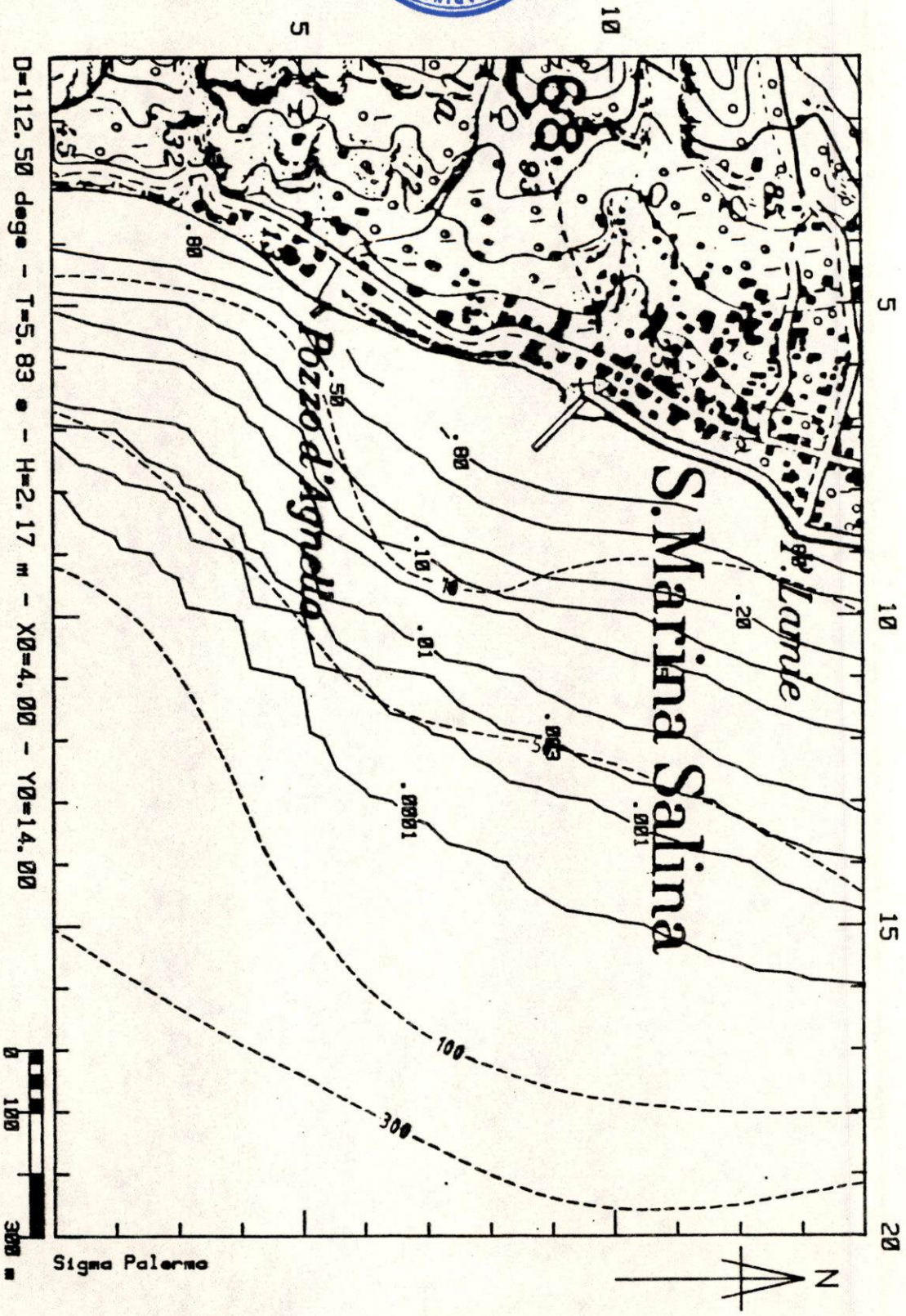


Fig. 3.3.4



IL SINDACO



IL SEGRETARIO COMUNALE

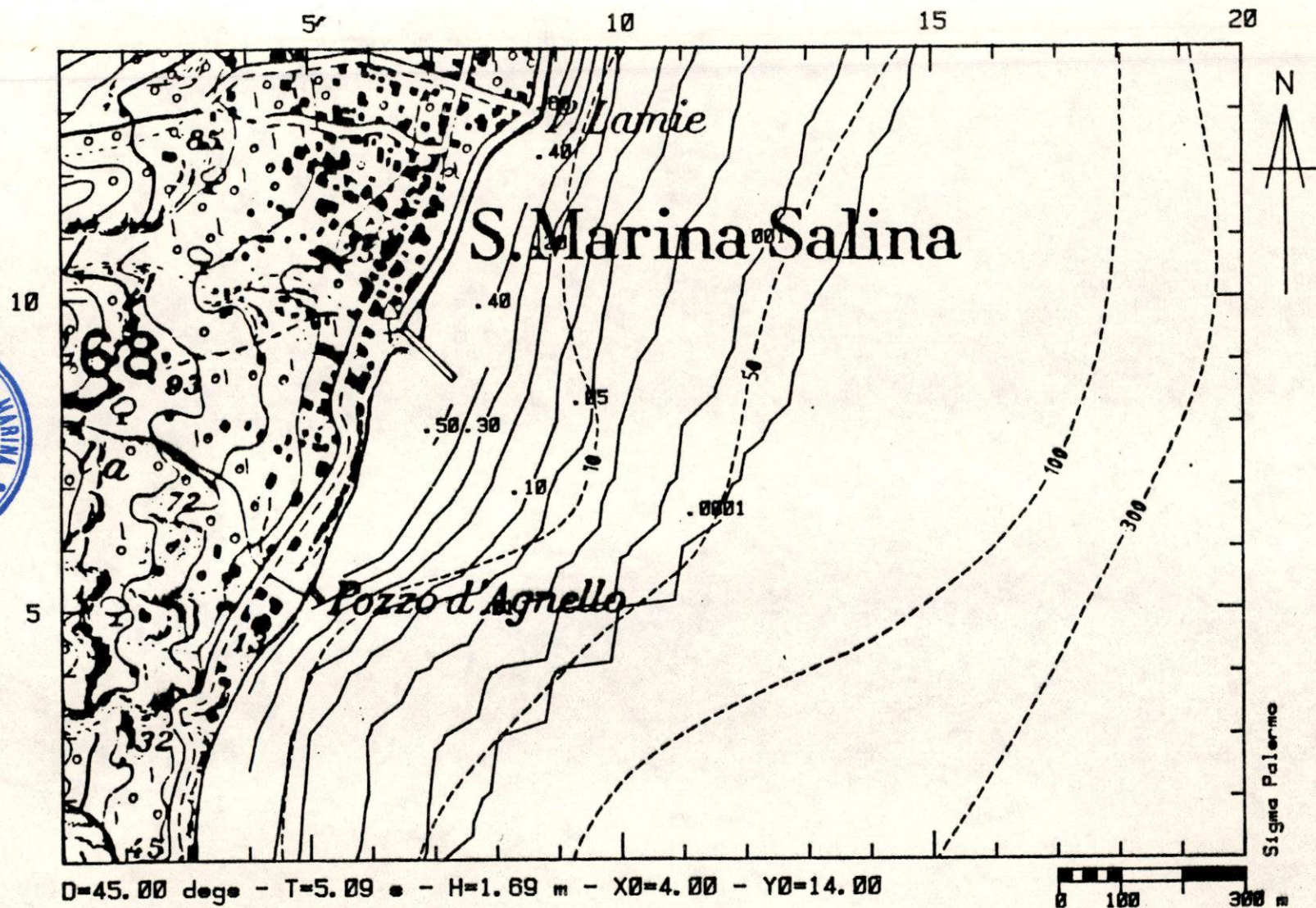


Fig. 3.3.5



IL SINDACO

COMUNE DI S. MARINA SALINA  
 Prov. di Messina - ITALIA

IL SEGRETARIO COMUNALE

R

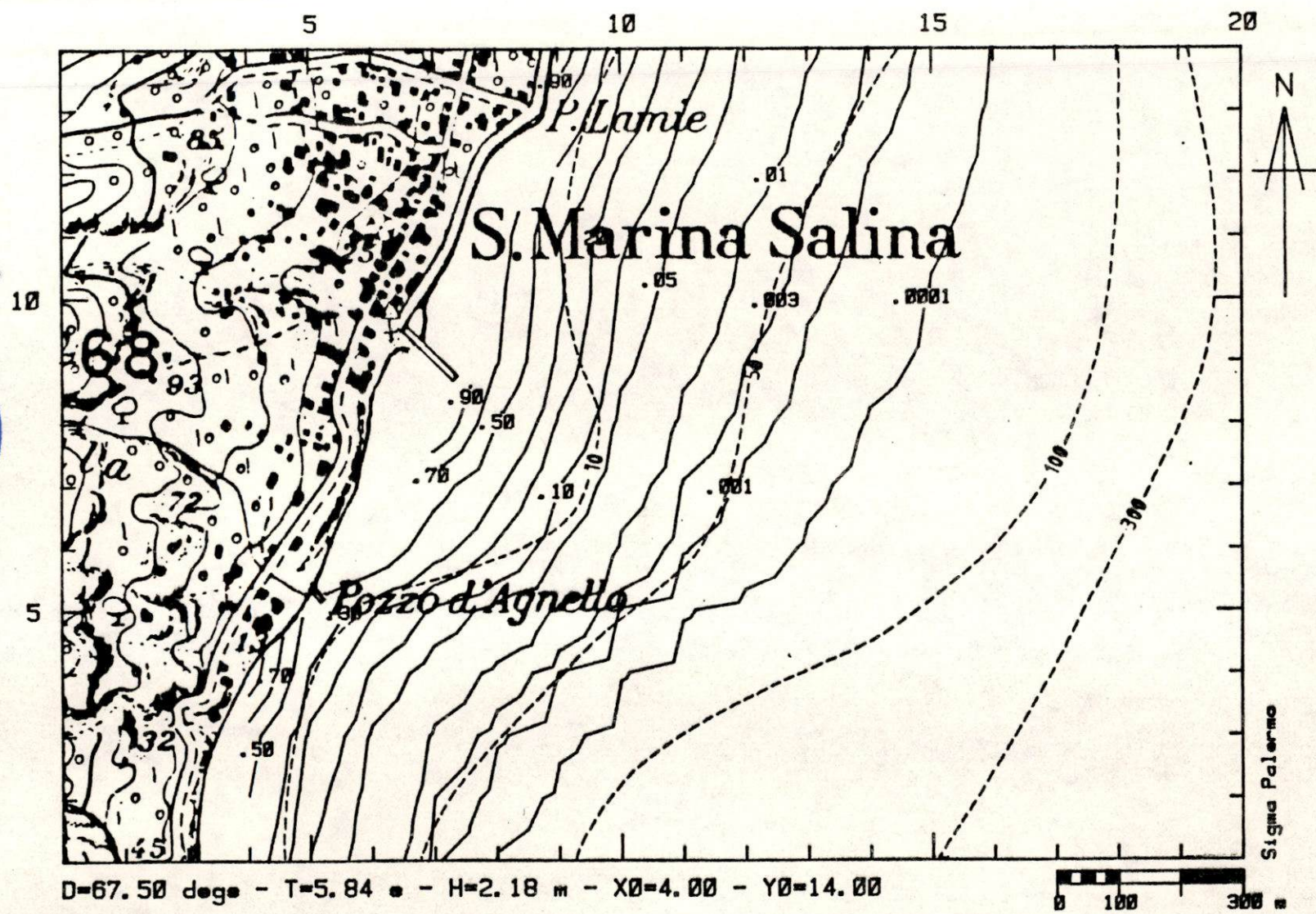


Fig. 3.3.6







IL SEGRETARIO COMUNALE



IL SINDACO

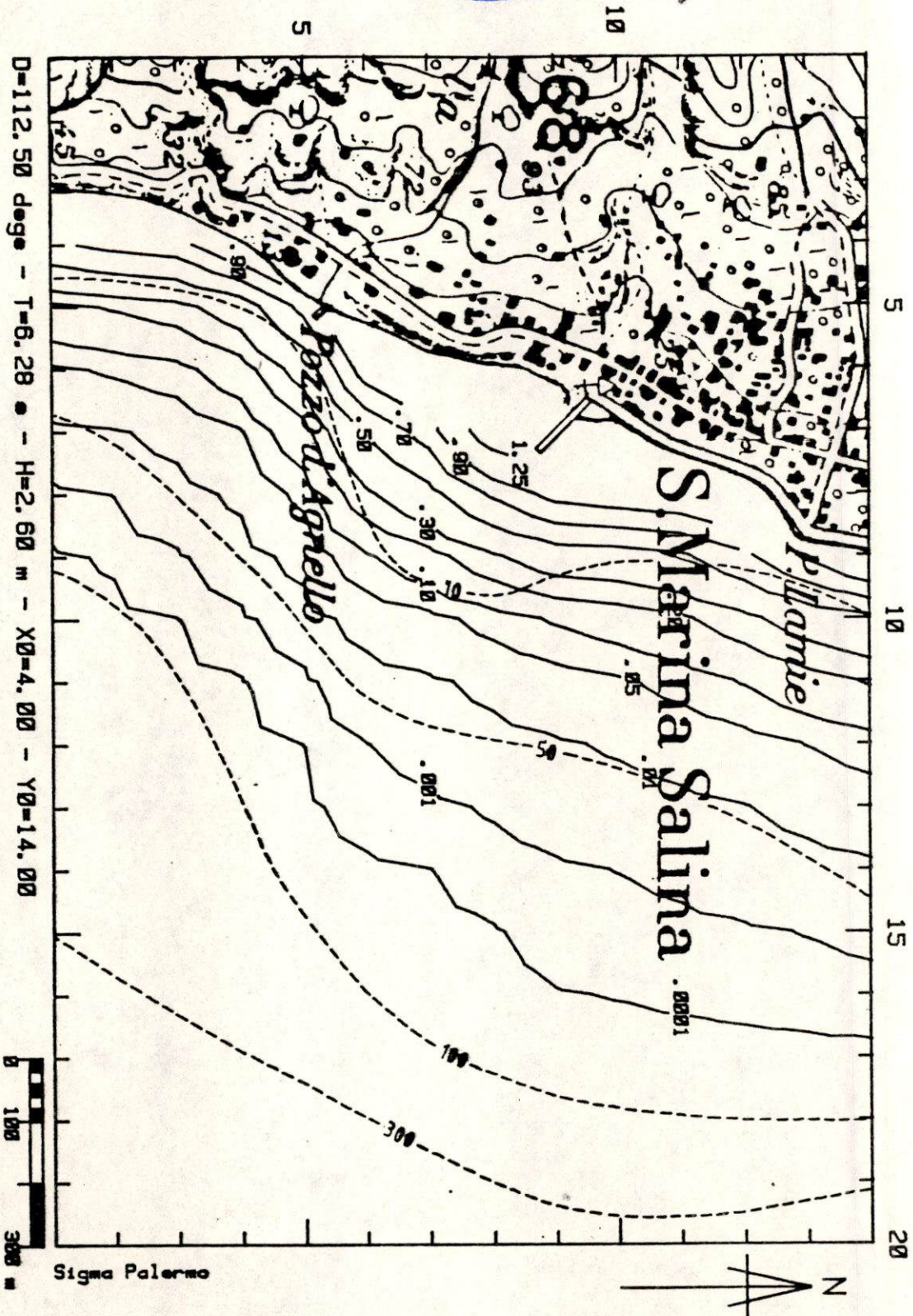


Fig. 3.3.8



IL SINDACO



IL SEGRETARIO COMUNALE

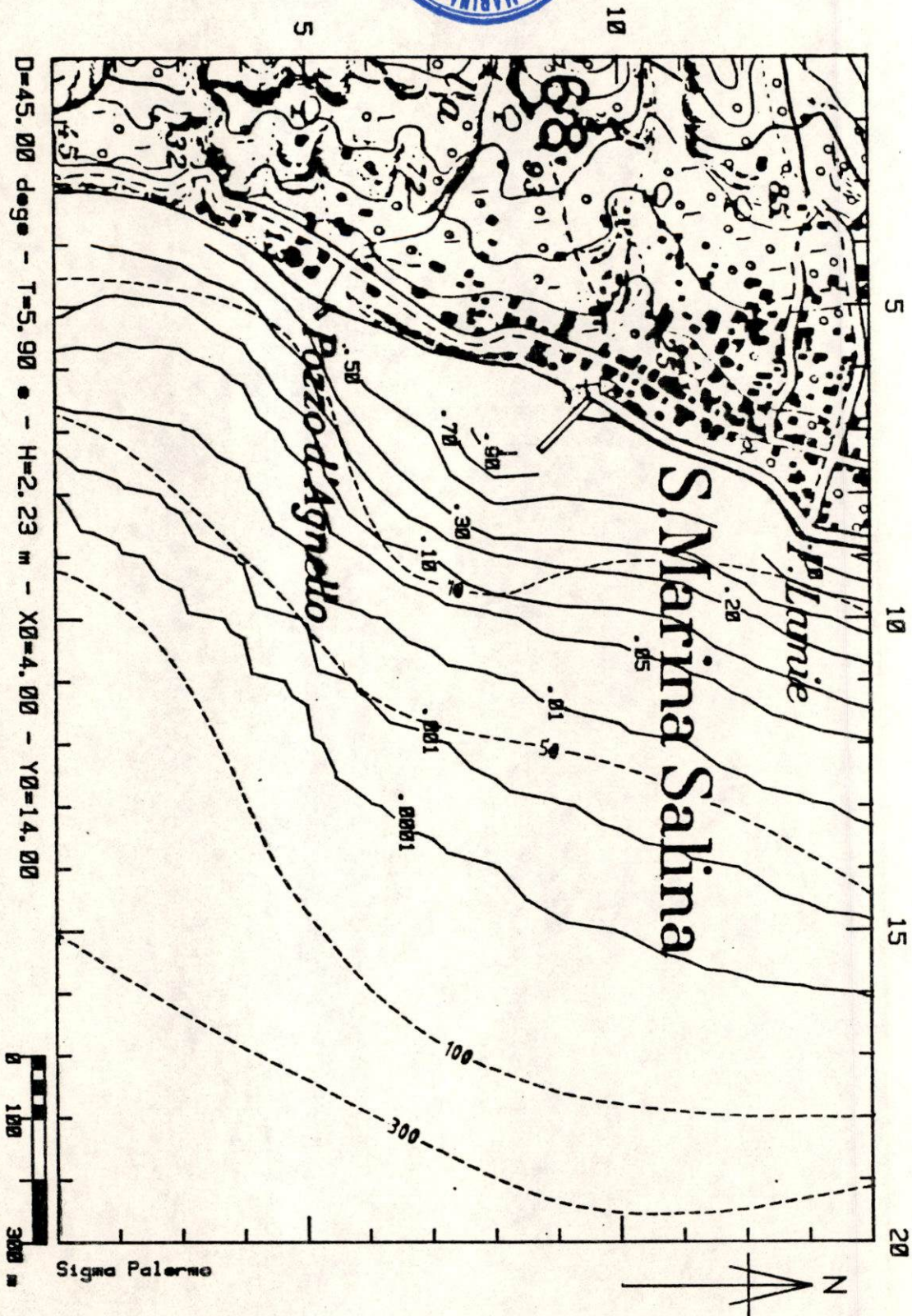


Fig. 3.3.9



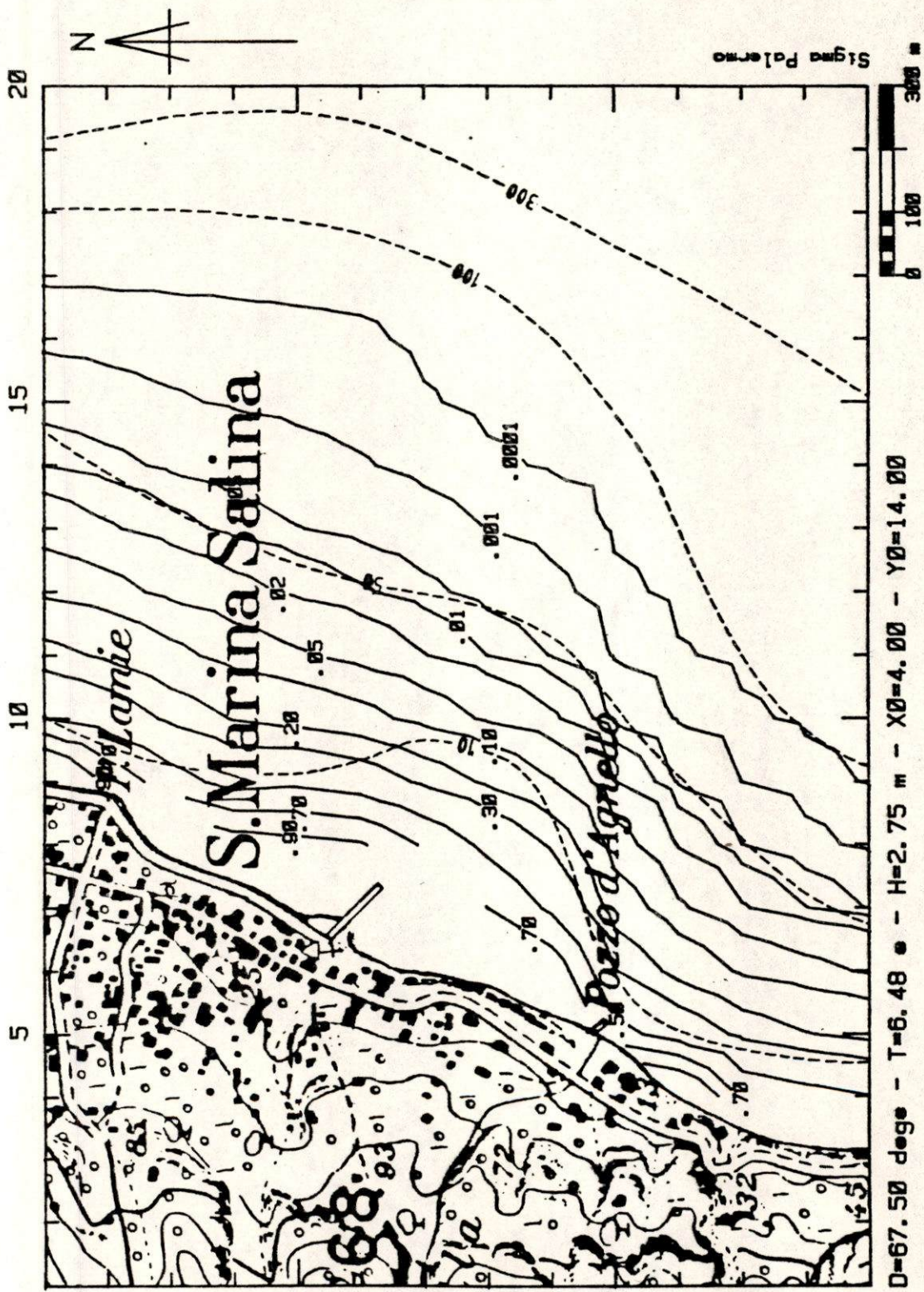


Fig. 3.3.10

IL SINDACO



IL SEGRETARIO COMUNALE



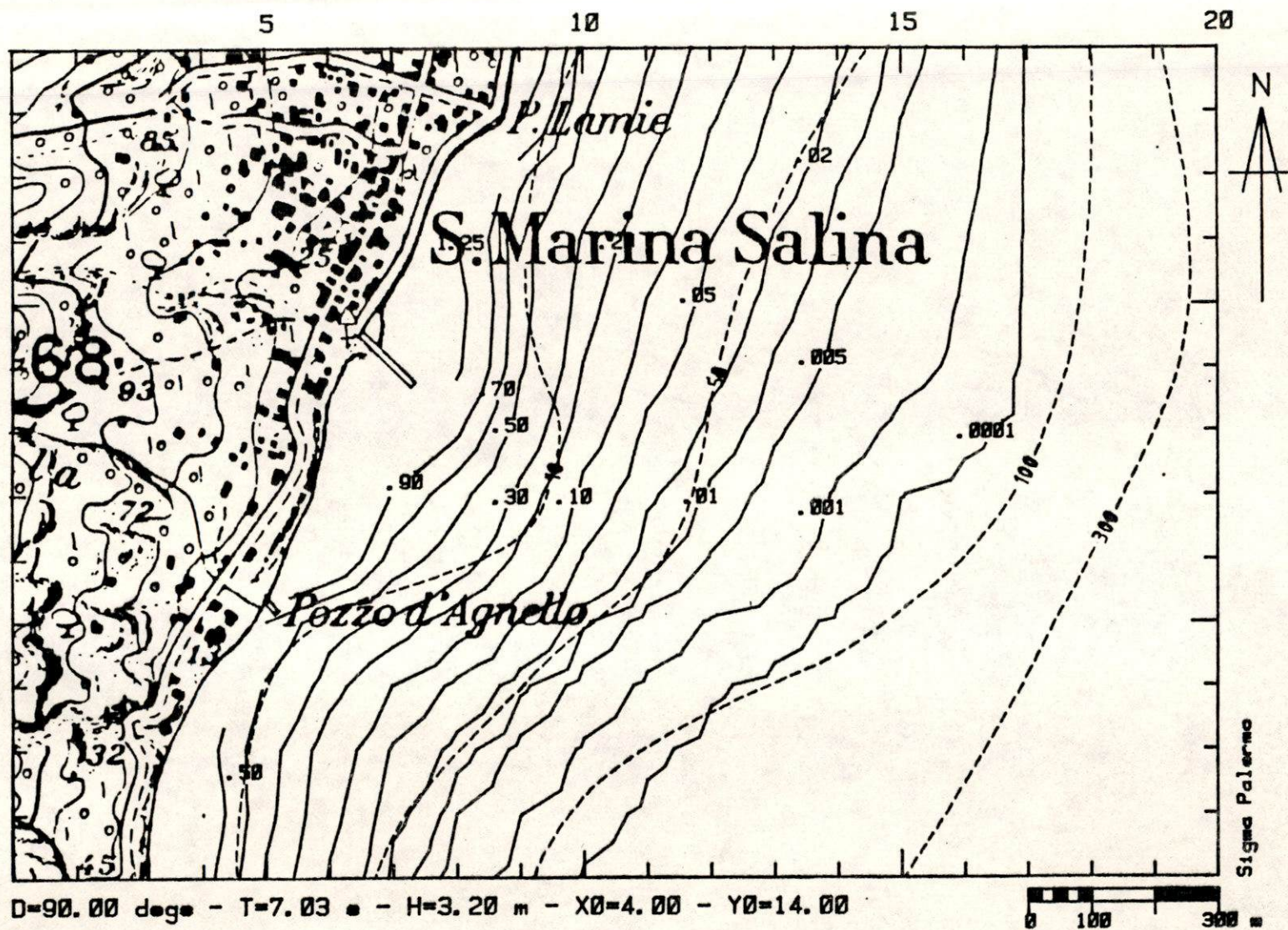


Fig. 3.3.11

IL SINDACO



IL SEGRETARIO COMUNALE



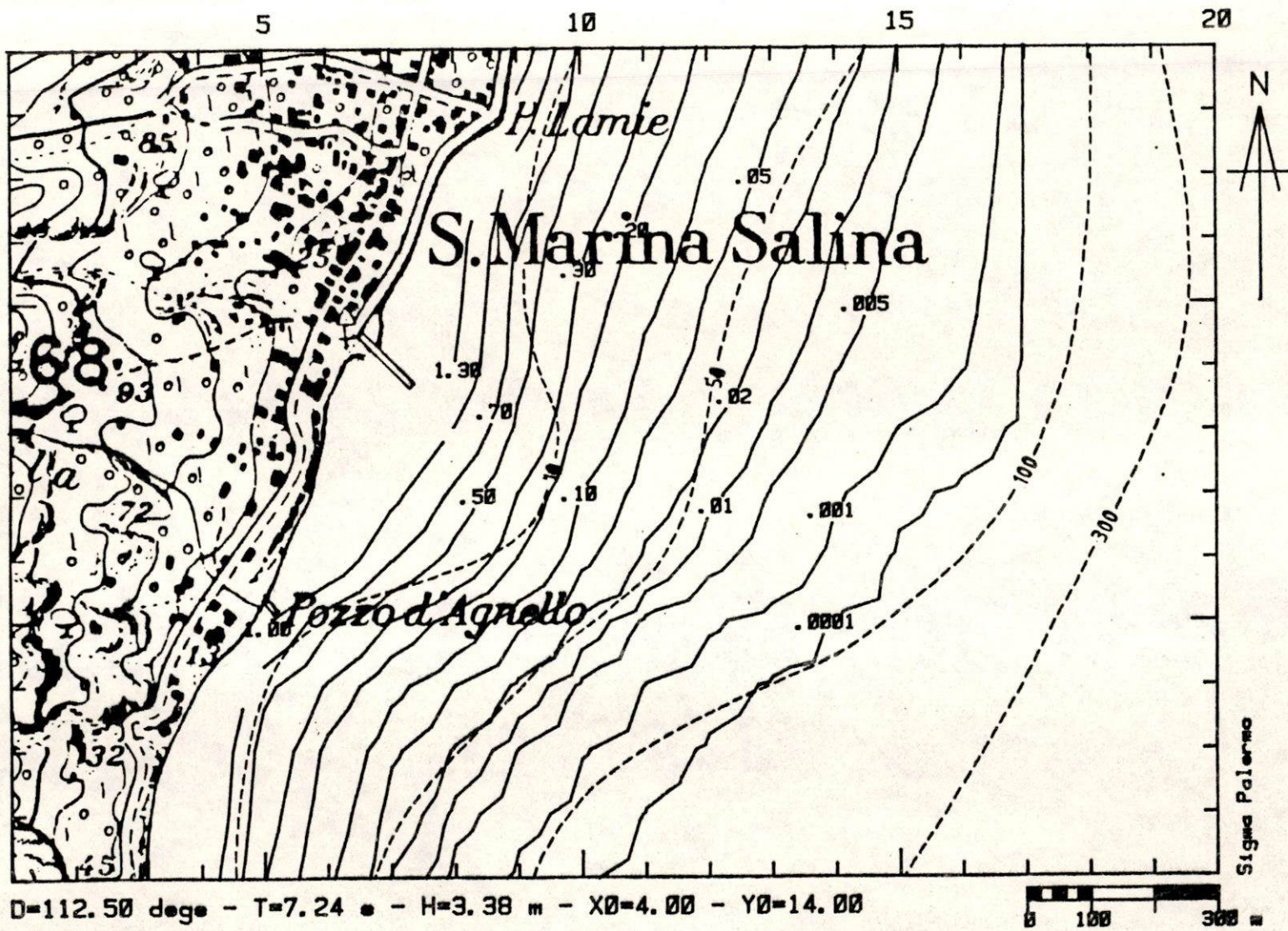


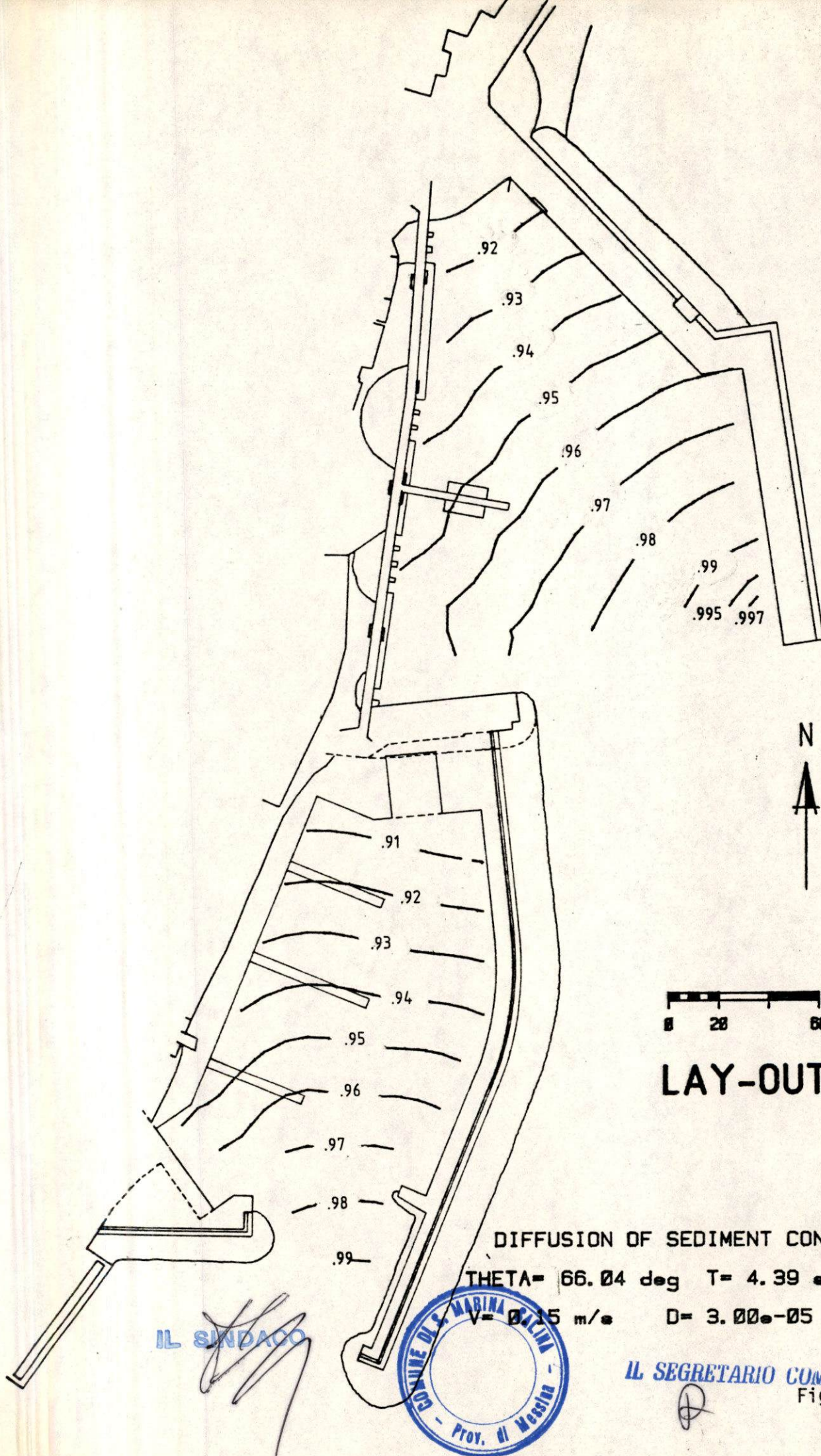
Fig. 3.3.12

IL SINDACO

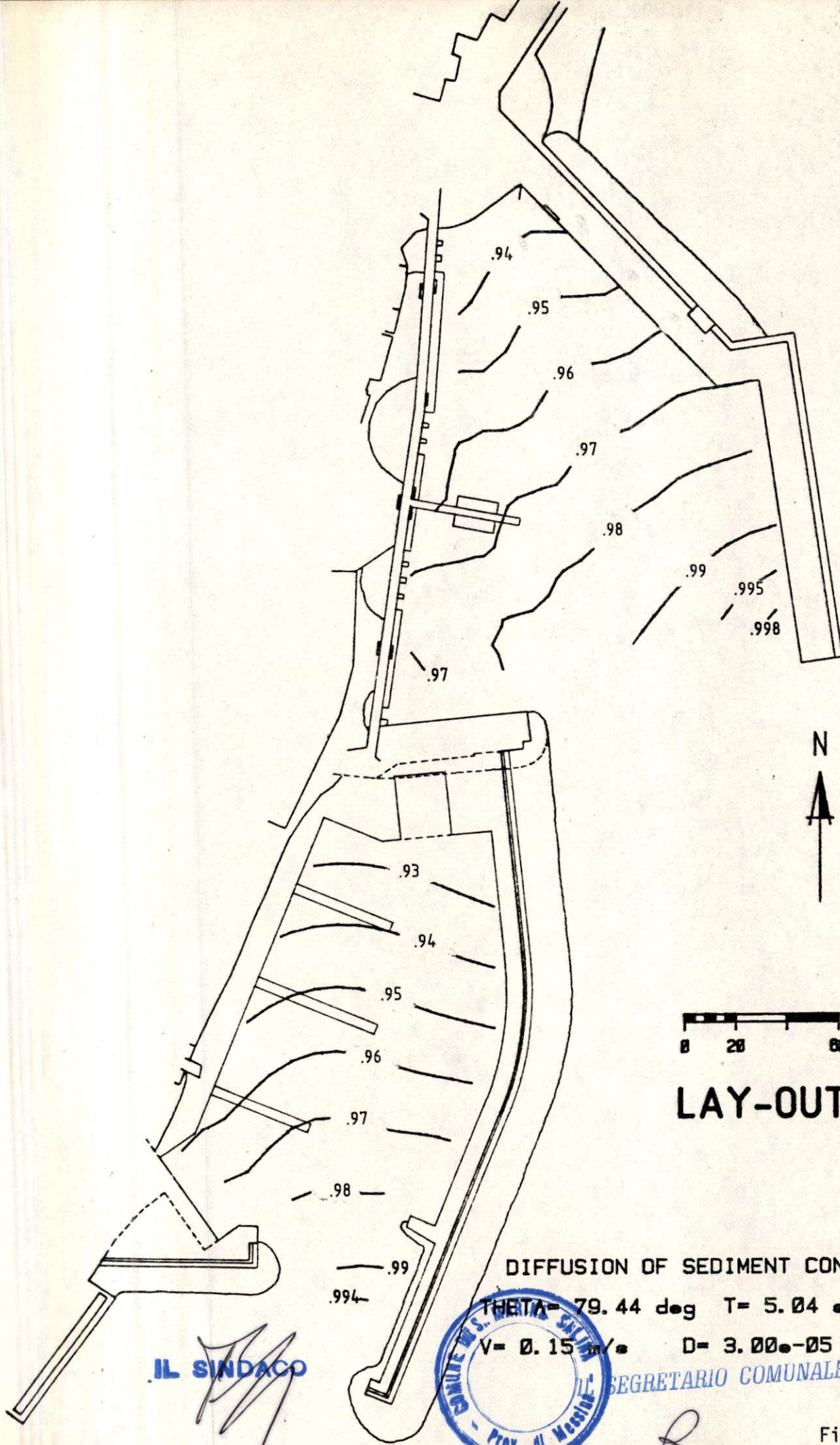


IL SEGRETARIO COMUNALE









0 20 60

# LAY-OUT 6

DIFFUSION OF SEDIMENT CONCENTRATION

THETA = 79.44 deg T = 5.04 s H = 1.35 m

V = 0.15 m/s D = 3.00e-05 m

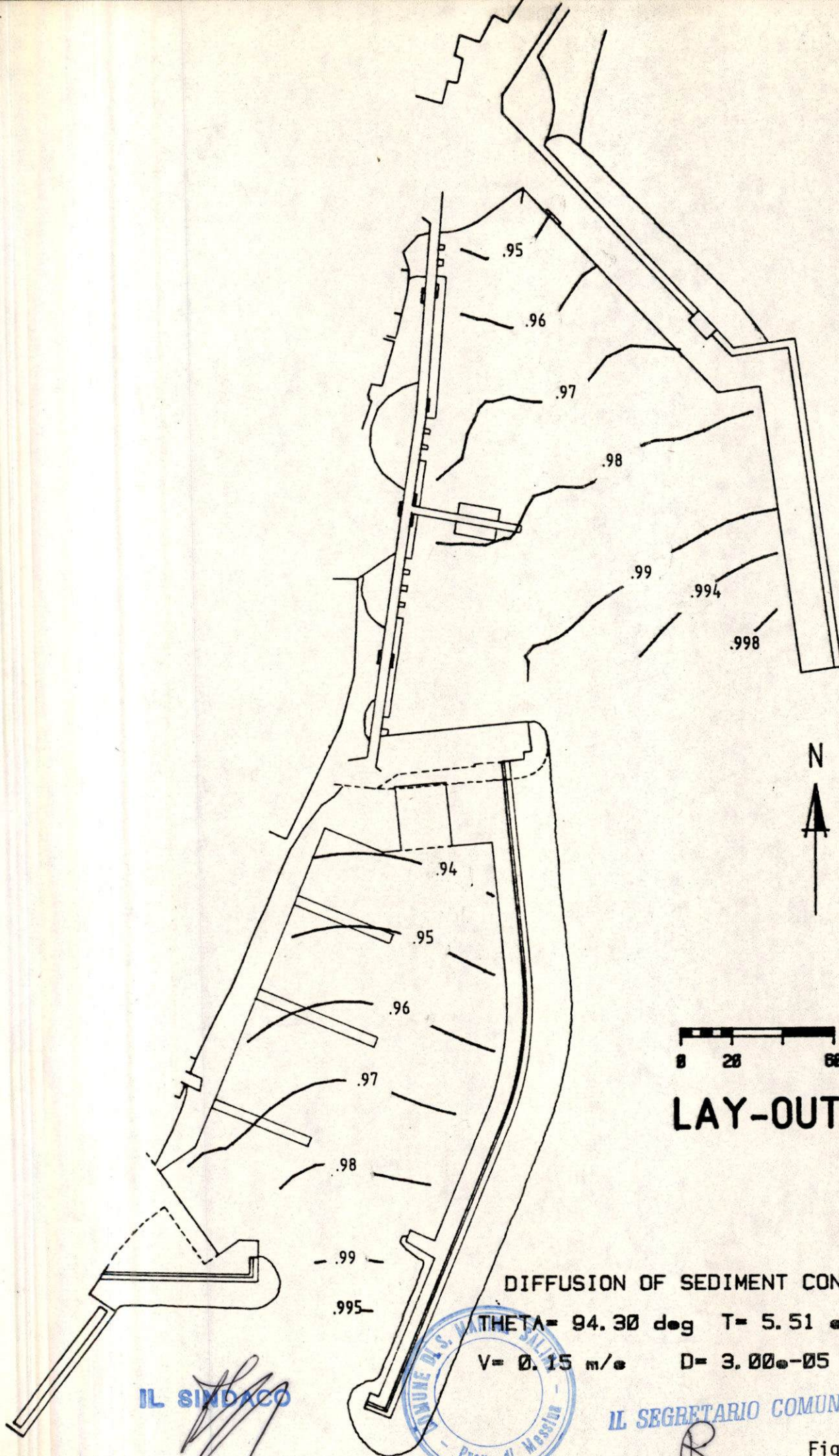
IL SINDACO



SEGRETARIO COMUNALE

Fig. 4.2.2





0 20 60 m

## LAY-OUT 6

DIFFUSION OF SEDIMENT CONCENTRATION

THETA = 94.30 deg T = 5.51 ° H = 1.72 m

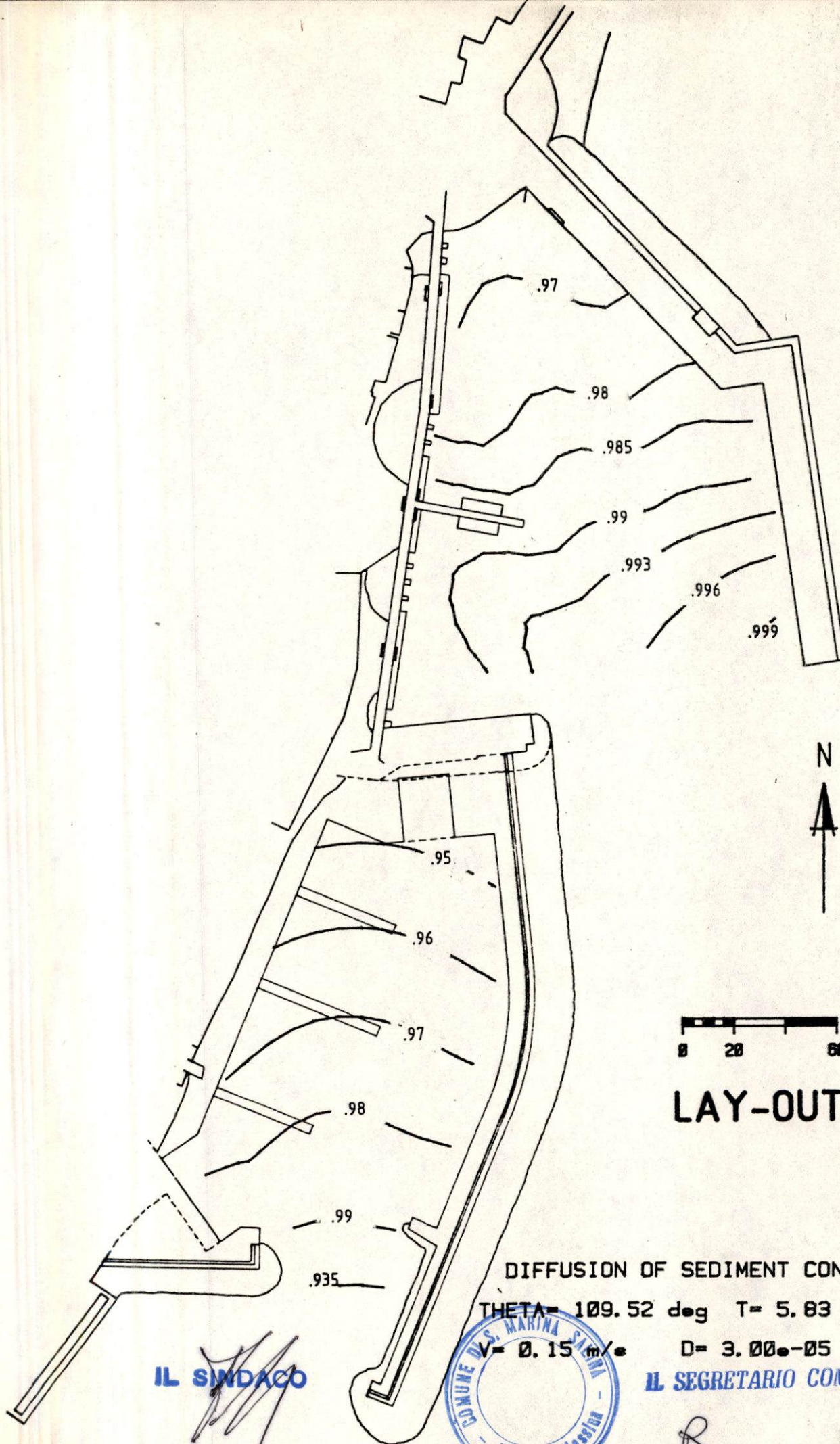
V = 0.15 m/s D = 3.00e-05 m

IL SINDACO

IL SEGRETARIO COMUNALE

Fig. 4.2.3.





0 20 60 m

# LAY-OUT 6

DIFFUSION OF SEDIMENT CONCENTRATION  
 THETA = 109.52 deg T = 5.83 • H = 2.02 m  
 V = 0.15 m/s D = 3.00 • 10<sup>-5</sup> m

IL SINDACO

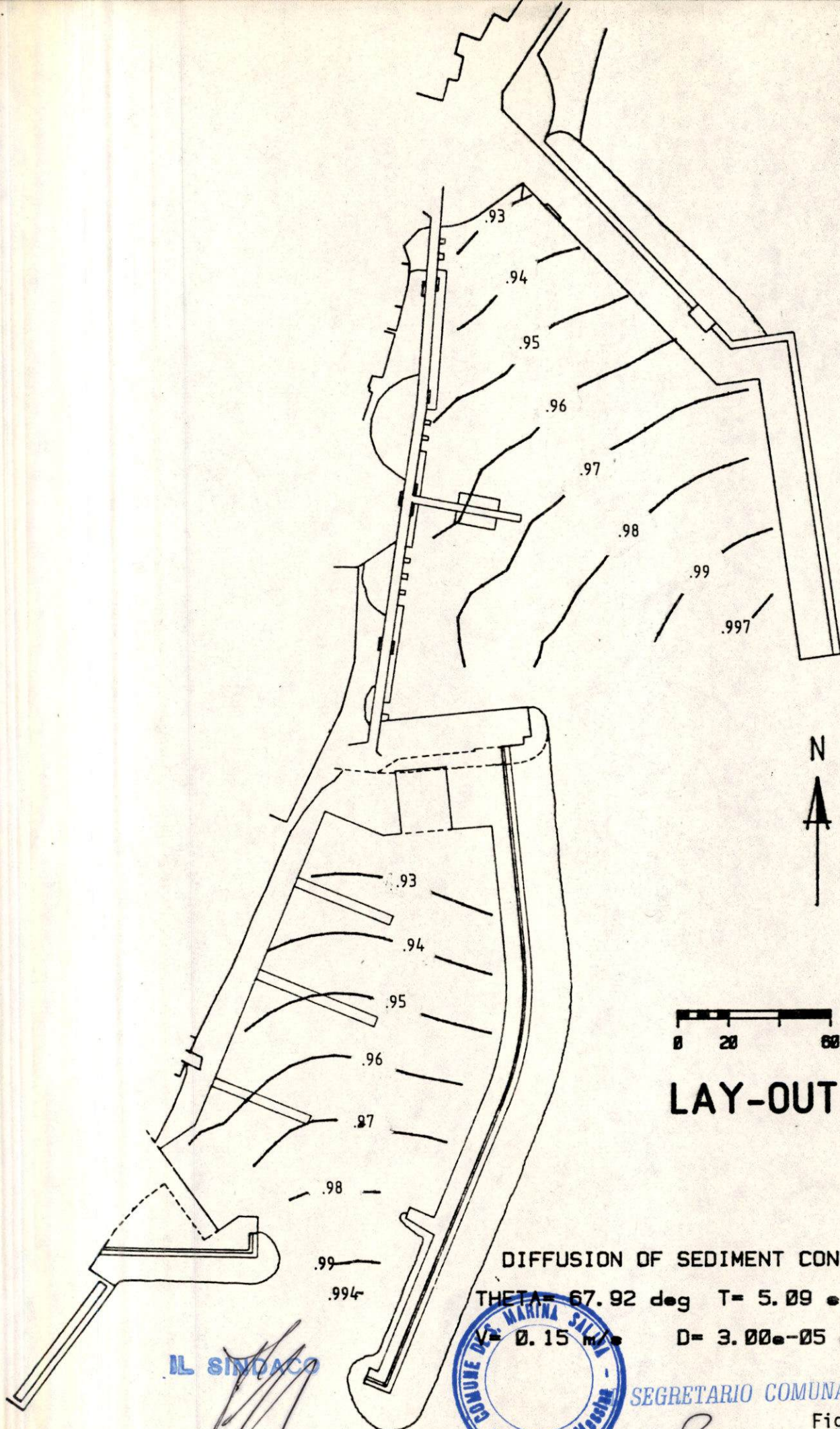


IL SEGRETARIO COMUNALE

R

Fig. 4.2.4

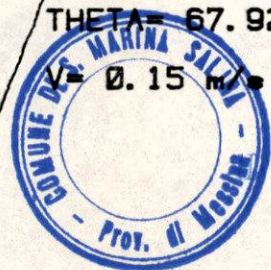




LAY-OUT 6

DIFFUSION OF SEDIMENT CONCENTRATION  
 THETA= 67.92 deg T= 5.09 s H= 1.29 m  
 V= 0.15 m/s D= 3.00e-05 m

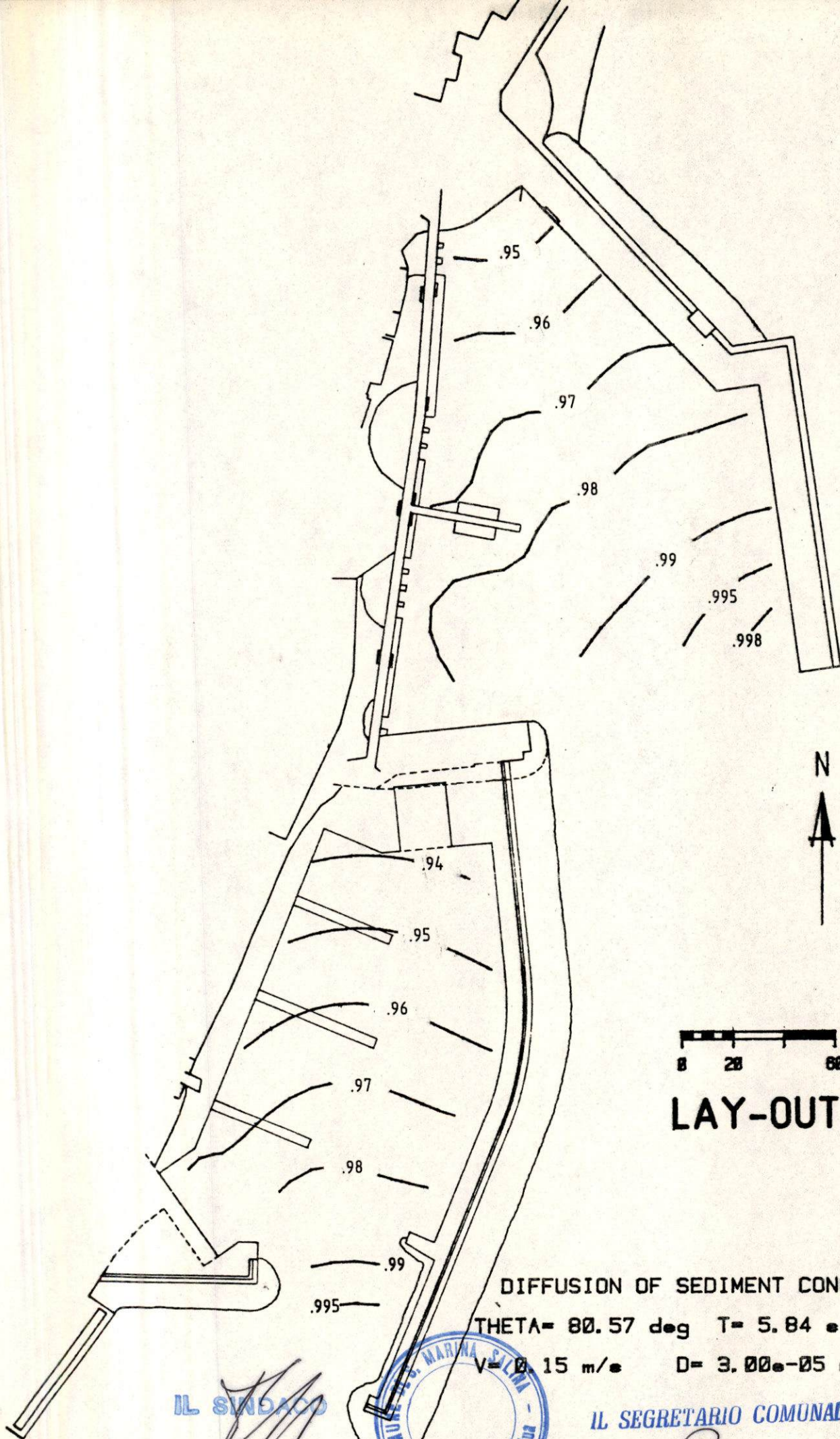
IL SINDACO



SEGRETARIO COMUNALE

Fig. 4.2.5





0 20 60 m

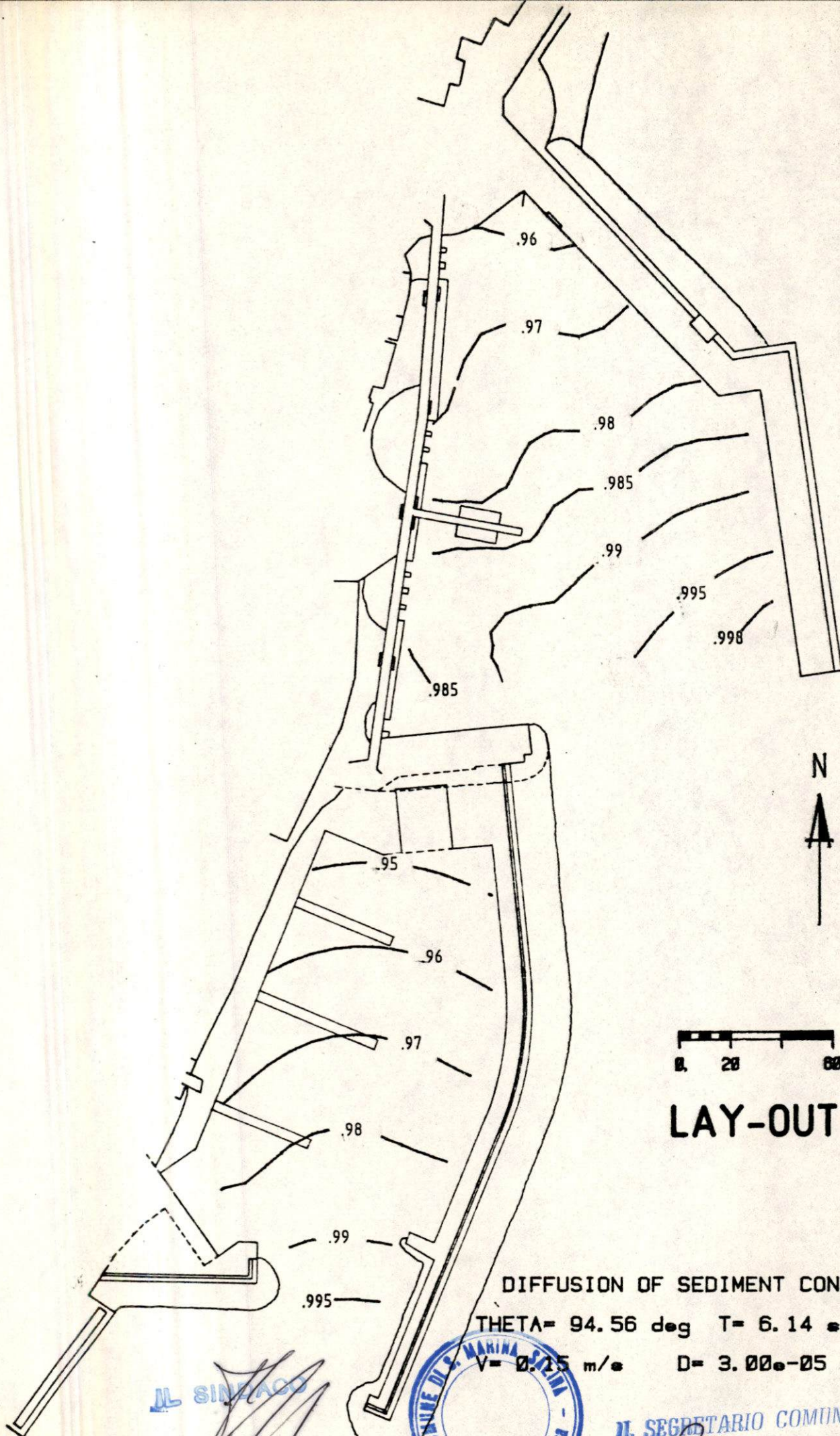
## LAY-OUT 6

DIFFUSION OF SEDIMENT CONCENTRATION  
 THETA= 80.57 deg T= 5.84 s H= 1.76 m  
 V= 0.15 m/s D= 3.00e-05 m

IL SEGRETARIO COMUNALE

Fig. 4.2.6

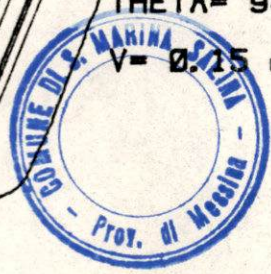




## LAY-OUT 6

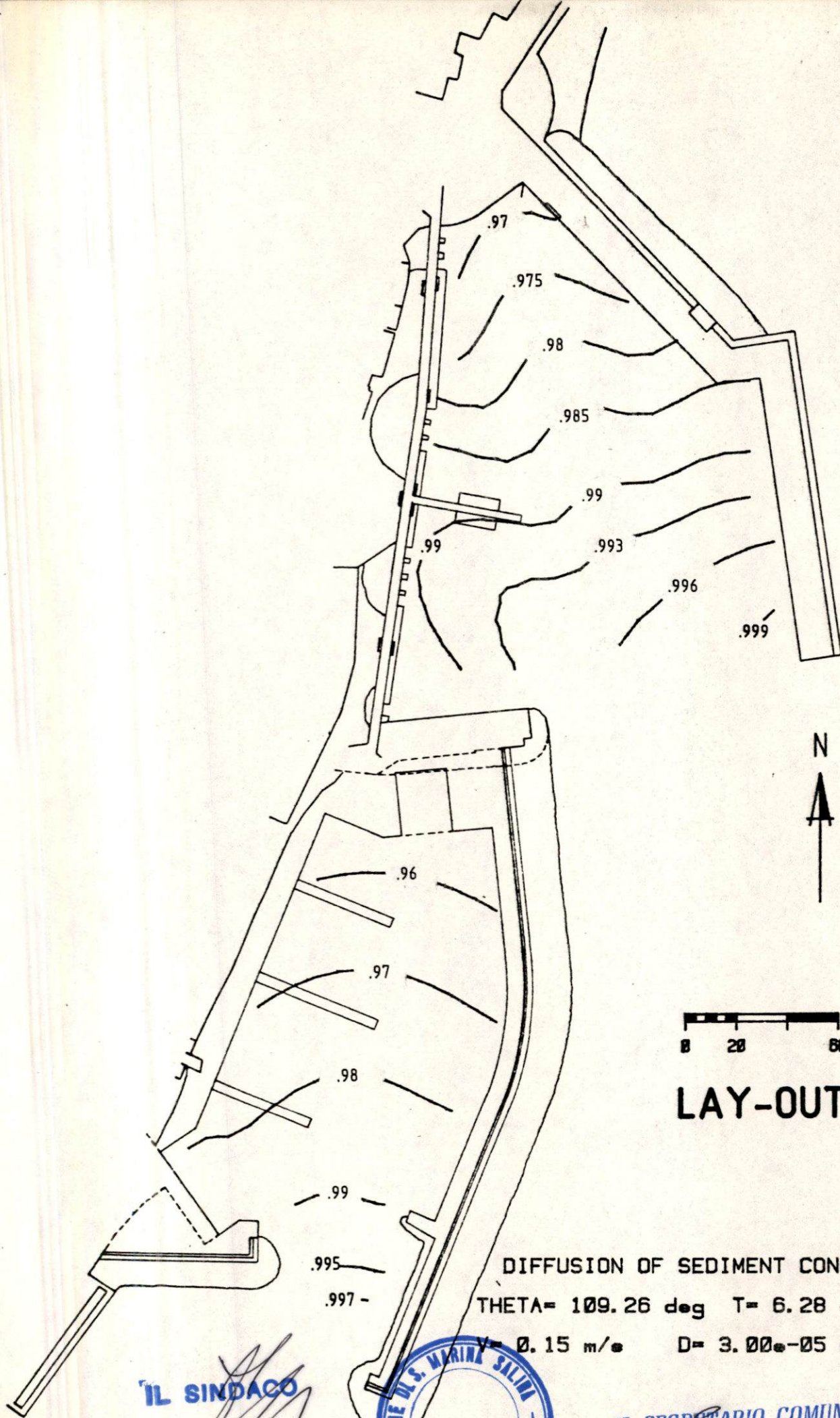
DIFFUSION OF SEDIMENT CONCENTRATION  
 THETA= 94.56 deg T= 6.14 s H= 2.11 m  
 V= 0.15 m/s D= 3.00e-05 m

IL SINDACO



IL SEGRETARIO COMUNALE



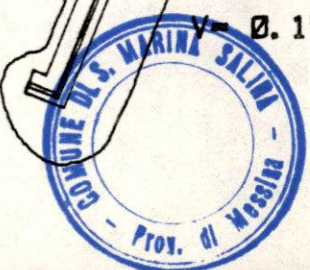


0 20 50 m

# LAY-OUT 6

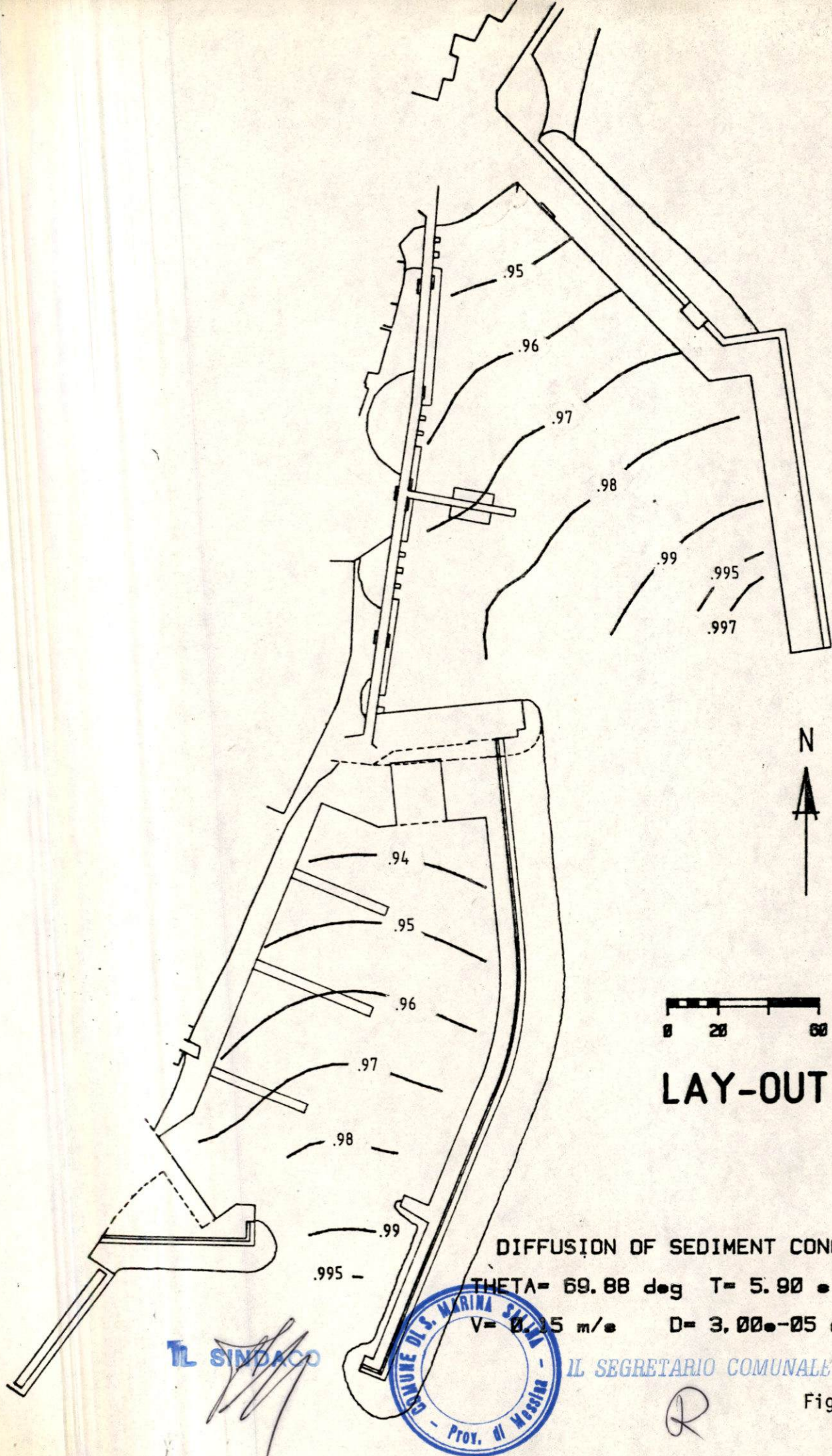
DIFFUSION OF SEDIMENT CONCENTRATION  
 THETA= 109.26 deg T= 6.28 s H= 2.43 m  
 V= 0.15 m/s D= 3.00e-05 m

IL SINDACO



IL SEGRETARIO COMUNALE  
 Fig. 4.2.8





## LAY-OUT 6

DIFFUSION OF SEDIMENT CONCENTRATION

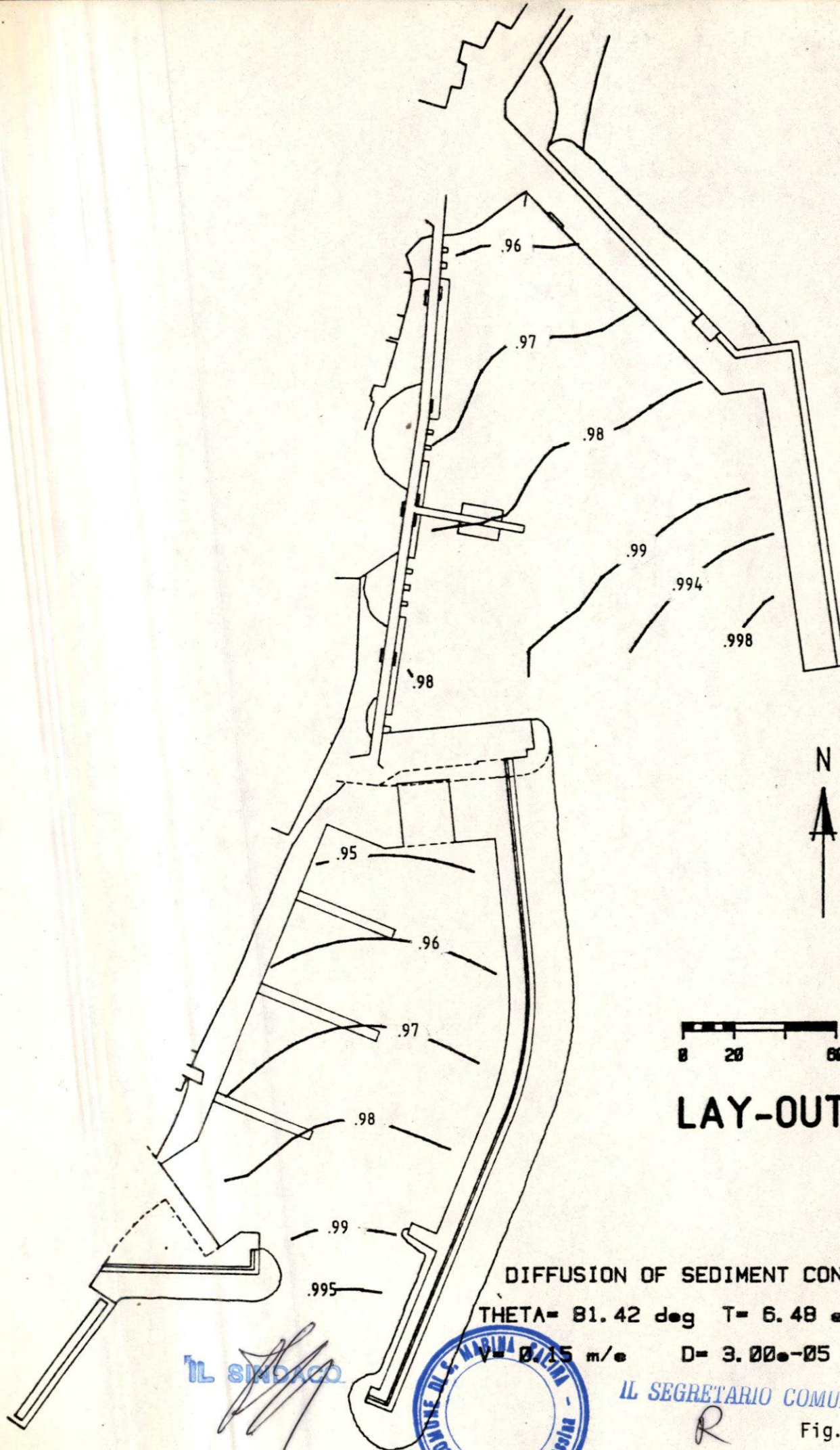
THETA= 69.88 deg T= 5.90 • H= 1.60 m

V= 0.25 m/s D= 3,00•-05 m

IL SEGRETARIO COMUNALE

Fig. 4.2.9





**LAY-OUT 6**

DIFFUSION OF SEDIMENT CONCENTRATION  
 THETA= 81.42 deg T= 6.48 e H= 2.21 m  
 V= 0.15 m/e D= 3.00e-05 m

IL SINDACO

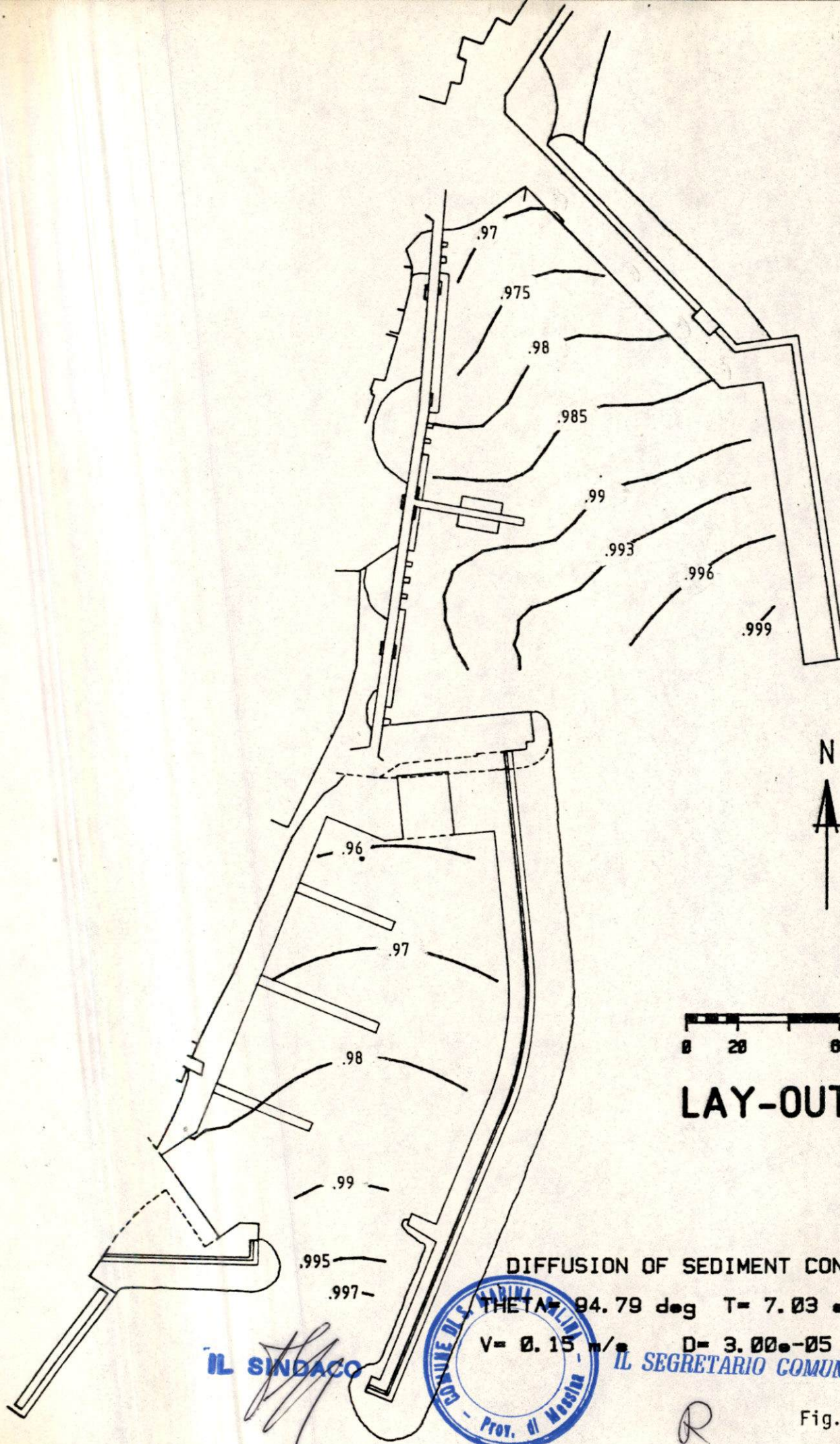


IL SEGRETARIO COMUNALE

R

Fig. 4.2.10





# LAY-OUT 6

DIFFUSION OF SEDIMENT CONCENTRATION

THETA = 94.79 deg T = 7.03 • H = 2.85 m

V = 0.15 m/s D = 3.00 • 10<sup>-5</sup> m

IL SINDACO

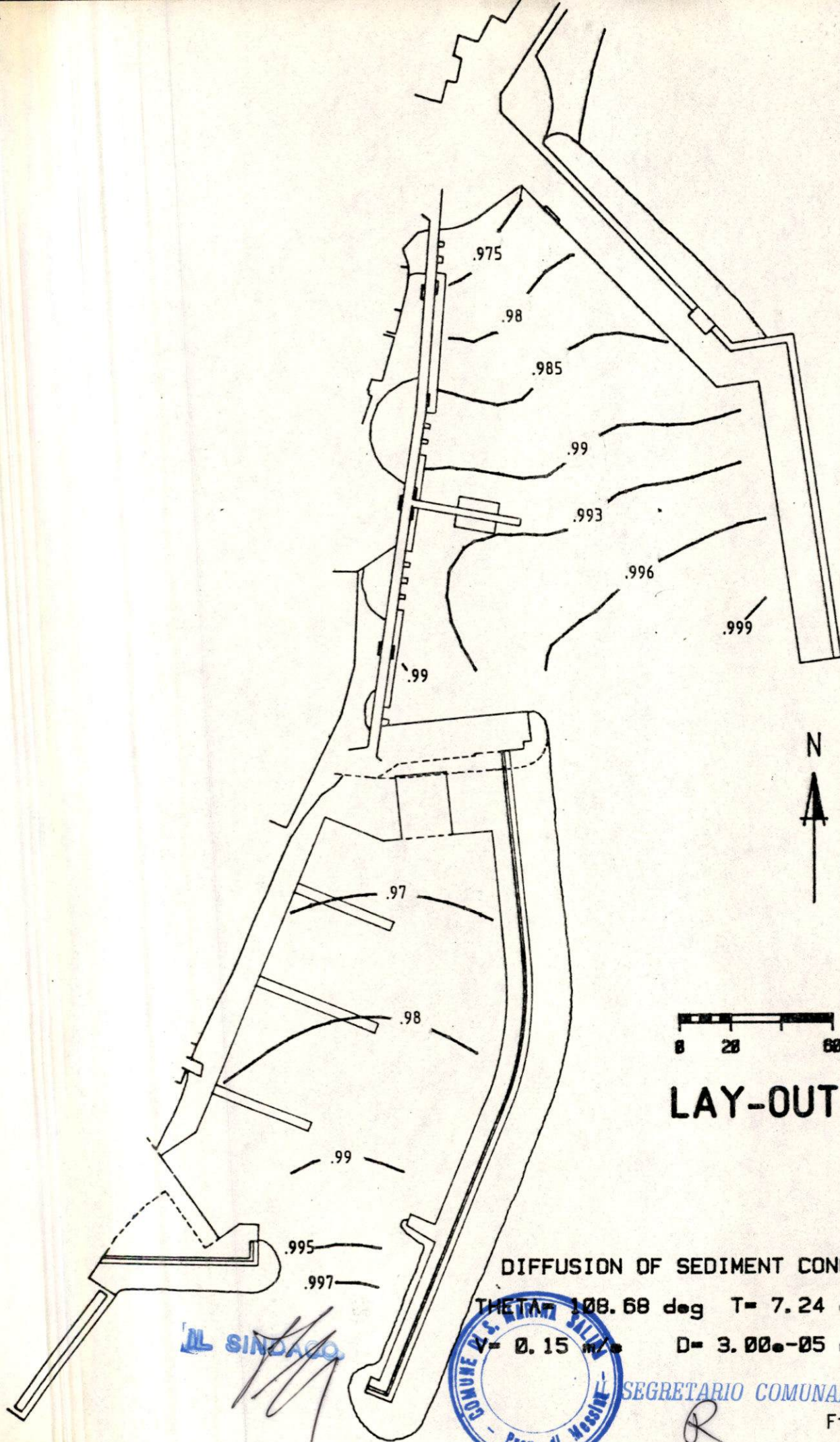


IL SEGRETARIO COMUNALE

R

Fig. 4.2.11





## LAY-OUT 6

DIFFUSION OF SEDIMENT CONCENTRATION

THETA = 108.68 deg T = 7.24 • H = 3.25 m

V = 0.15 m/s D = 3.00 • 10<sup>-5</sup> m

IL SINDACO



SEGRETARIO COMUNALE

Fig. 4.2.12